



TTT OWNER PACKET

Welcome to the Tipped Tavern Family!

Your custom-built trailer is ready to hit the road and help you build your mobile business dreams. This packet is your go-to resource for friendly reminders, helpful tips, and a travel checklist to keep your Tipped Tavern Trailer running smoothly and looking great for years to come.

FRIENDLY REMINDERS

- **Annual Maintenance is a Must:**
Like RVs and campers, your trailer requires yearly maintenance to stay in top shape. Schedule regular inspections to check tires, brakes, axles, bearings, seals, and lights.
- **Weather Exposure:**
While your trailer is built to handle the elements, it is not 100% weather-sealed. For long-term protection:
 - Store it in a covered unit, garage, or use a high-quality trailer cover.
 - Avoid prolonged exposure to extreme heat, rain, or snow whenever possible.
 - If your trailer is exposed to rain or moisture during an event, be sure to thoroughly dry all surfaces before storing to prevent damage or mildew.
- **We're Always Here to Help:**
Questions? Concerns? Need a refresher on your build?
Contact us anytime — we're your ongoing support team.

Cody Korsmeyer

Phone: 303-638-9411

Email: tippedtaverntrailers@gmail.com

Website: www.tippedtaverntrailers.com

HELPFUL TIPS & TRICKS

- **Pre-Trip Walkaround:**
Always do a full walkaround before towing. Check for loose cables, secure latches, flat tires, and anything that looks out of place.
- **Weight Distribution:**
Evenly distribute your equipment and supplies inside the trailer to avoid strain on the frame and to ensure smoother towing.
- **Cleaning Matters:**
Regularly clean both the interior and exterior. Dust, dirt, and moisture can lead to wear if left untreated.
- **Electrical Systems:**
If your trailer includes electrical features, use a surge protector when plugging into any external power source.
- **Interior Storage:**
Use padded bins or cabinet locks to keep glassware, tools, or products safe and secure during travel.
- **Ventilation:**
While our trailers do not come equipped with built-in heating or ventilation systems, we recommend using a portable fan or heater after use to help reduce moisture and heat buildup—especially during warmer months.

TRAILER TOOLKIT: RECOMMENDED ITEMS TO PURCHASE

Security & Safety

- Heavy-duty padlocks for door latches
- Trailer hitch lock
- Wheel chocks (rubber or heavy-duty plastic)
- Cabinet door locks or latches (baby-proof)
- Magnetic solar powered motion-sensor lights
- Fire extinguisher
- First aid kit



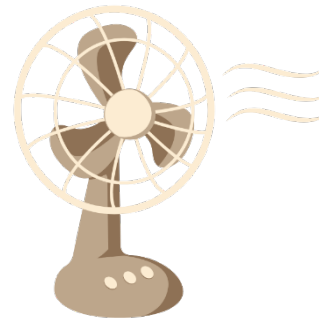
Organization & Storage

- Padded storage bins or crates
- Drawer organizers or dividers
- Bungee cords or cargo nets
- Foldable step stool or mini ladder
- Toolbox (for repairs and adjustments)
- Velcro straps or zip ties



Comfort & Environment

- Portable fan (battery-operated or plug-in)
- Compact heater (safe for enclosed spaces)
- Trailer cover (for protection when parked)
- Mini dehumidifier or moisture absorbers
- Battery-powered lights or LED string lighting



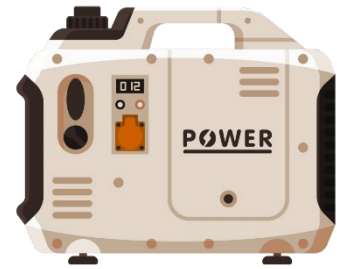
Cleaning & Maintenance

- Cleaning supplies (multi-surface spray, wipes, paper towels)
- Small broom & dustpan
- Portable vacuum (battery or 12V)
- Trash bags and small bin
- Hand sanitizer and soap dispenser
- Towels and microfiber cloths
- Waterproof floor mats or rugs
- Basic repair kit (duct tape, adhesives, screws, etc.)



Power & Tech

- Power strip with surge protector
- Extension cords (indoor/outdoor rated)
- 12V inverter or generator
- USB chargers and adapters
- Wi-Fi hotspot or signal booster (if needed)



Optional/Business-Specific Items

- Fold-out table or mobile workstation
- Portable signage or branding decals
- Point-of-sale system or tablet stand
- Folding chairs or seating
- Portable shade or awning



TRAVEL CHECKLIST

Before You Tow:

- Walkaround inspection (tires, lights, latches, doors)
- Check and tighten lug nuts
- Check tire pressure
- Secure all loose items inside
- Secure all cabinets and drawers
- Verify brakes and signal lights are working
- Ensure trailer is properly hitched and safety chains are in place



On the Road:

- Drive cautiously — remember, you're hauling a business!
- Stop for a quick check after the first 30 minutes of driving
- Avoid rough roads or steep driveways when possible

After Arrival:

- Chock trailer wheels before unhitching
- Level and stabilize the trailer using leveling blocks or stabilizing jacks—both of which are readily available on Amazon
- Secure your trailer with a hitch lock and use additional padlocks on the door latches
- Open service door/entry door if temperature control is needed

Final Thoughts

Your Tipped Tavern Trailer is more than a trailer — it's a business on wheels. With regular care, safe travel practices, and a bit of prep, it will be a reliable companion for years to come.

Thank you for trusting us with your build. Welcome to the road-ready community of mobile entrepreneurs!

The Tipped Tavern Team